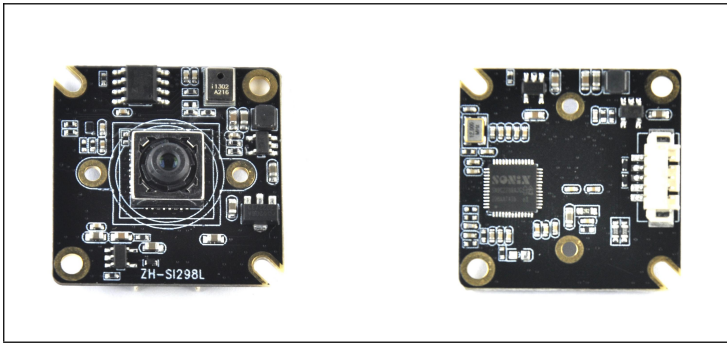


16MP USB2.0 Camera Module Specifications



I. Main Parameters

Product Name	16MP USB2.0 Camera Module
Product Code	WN-L2108.K224S
Module Size	28*28mm
Image Sensor	1/2.8-inch IMX298 CMOS Sensor
Max. Resolution	4656 H x 3496 V
Pixel Size	1.12*1.12μm
Output Format	MJPEG
Field of View	75°
Lens	EFL: 3.3mm, F/No: 2.2, 6P+IR 650nm
Audio Input	Digital Microphone
Focus Mode	Autofocus
Shutter Mode	Electronic Rolling Shutter
Output & Power Supply	High Speed USB2.0
Interface	5PIN 1.25mm Connector
Controllable Parameters	Brightness, Contrast, Saturation, Hue, Sharpness, Gamma, White Balance, Backlight Contrast, Exposure
Supported OS	UVC-compliant, Plug and Play for Windows, Android, Linux, Mac OS, etc.
Connection Cable	Default 1.0 Meter USB Cable

2. Supported Resolutions and Frame Rates

Formats	Resolutions	Frame Rates
MJPEG	4656x3496	8FPS
	4208x3120	10FPS
	3264x2448	10FPS
	2592x1944	10FPS
	2048x1536	10FPS
	1920x1080	15FPS
	1280x720	15FPS
	640x480	15FPS

3. PIN Definitions

Pin No.	Signal Names	Descriptions
1	VCC	DC 5V
2	DM	USB2.0 Data-
3	DP	USB2.0 Data+
4	GND	Ground
5	GND	Ground

4. Working Conditions

Working Voltage	DC 5V
Working Current	220mA
Working Temperature	-20°C ~ 60°C
Storage Temperature	-20°C ~ 85°C
Humidity	80 ~ 85%

5. Shape and Dimensions (Unit: mm)

